

The quartz spine of KL

Written by straits-mongrel

Wednesday, 23 September 2009 01:05 - Last Updated Wednesday, 23 September 2009 14:48



The quartz spine of KL

Written by straits-mongrel

Wednesday, 23 September 2009 01:05 - Last Updated Wednesday, 23 September 2009 14:48

It forms the northern edge of the Klang Valley, a crisp quartz line that marks the flatlands and the ascension towards Genting Highlands in the state of Pahang. Behind it lies the Klang Gates Dam, a reservoir feeding water to thousands of homes in the valley.

Seen clearly from the MRR2 highway, Bukit Tabur (also known as Bukit H Angus to the locals) lays claim to being the world's longest quartz-rich ridge. The main access points to the trail is at the Klang Gates in Taman Melawati.

Bukit Tabur is a popular spot for hikers and rock-climbers. It isn't tall - averaging 200 metres in height - but it's steep, craggy and it runs for 16km (if you're so inclined to cover the entire length). There's the west side, which is easier on the limbs and muscles, and the east side which is more challenging.

The quartz spine of KL

Written by straits-mongrel

Wednesday, 23 September 2009 01:05 - Last Updated Wednesday, 23 September 2009 14:48



and a final day, the typical of a day in a city where the sun is always shining, and the sky is always blue. (round

The quartz spine of KL

Written by straits-mongrel

Wednesday, 23 September 2009 01:05 - Last Updated Wednesday, 23 September 2009 14:48



Neighbourhood side, views of, ummm..., progress against the more verdant Taman Melawati

The quartz spine of KL

Written by straits-mongrel

Wednesday, 23 September 2009 01:05 - Last Updated Wednesday, 23 September 2009 14:48



Statesman's spine of KL is the only one of its kind, offering a view of the city from the top of the mountain.

The quartz spine of KL

Written by straits-mongrel

Wednesday, 23 September 2009 01:05 - Last Updated Wednesday, 23 September 2009 14:48

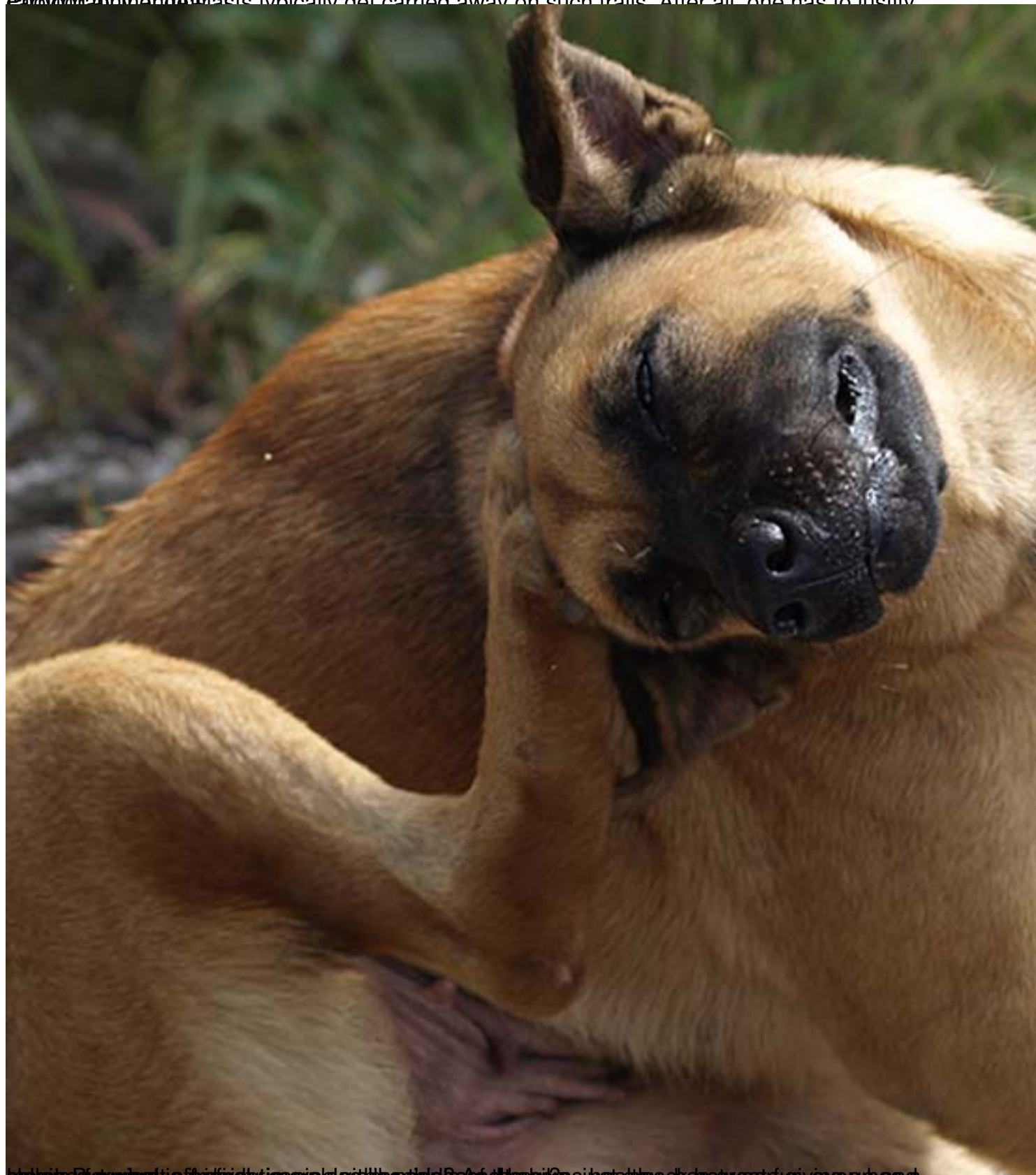


The quartz spine of KL

Written by straits-mongrel

Wednesday, 23 September 2009 01:05 - Last Updated Wednesday, 23 September 2009 14:48

~~Plenty more could be said on this, but the points typically get carried away on such trails. After all, one has to justify~~



And he's got what is a truly iconic place on the map. But if he were, just as time has gone by, giving up and

The quartz spine of KL

Written by straits-mongrel

Wednesday, 23 September 2009 01:05 - Last Updated Wednesday, 23 September 2009 14:48



Under a microscope, the quartz spine is a complex, branching structure, waiting for whatever

The quartz spine of KL

Written by straits-mongrel

Wednesday, 23 September 2009 01:05 - Last Updated Wednesday, 23 September 2009 14:48



...the poses soon get a little too far. For posterity, it seems. Whatever.

The quartz spine of KL

Written by straits-mongrel

Wednesday, 23 September 2009 01:05 - Last Updated Wednesday, 23 September 2009 14:48



After a long time (we were in the forest for about 2 hours) we found a small stream (about 10cm wide) and the moss was growing on the rocks and the banks of the stream.

The quartz spine of KL

Written by straits-mongrel

Wednesday, 23 September 2009 01:05 - Last Updated Wednesday, 23 September 2009 14:48



More pictures of the quartz spine of KL can be found [here](#) and [here](#). The quartz spine of KL is a very important landmark in the area and is a very popular spot for tourists to visit. It is a very beautiful and scenic spot and is a must-visit for anyone who is interested in the history and culture of KL.